



**durotype**  
**Passion for Fonts**

[www.durotype.com](http://www.durotype.com)

# Aspira

Type System of 112 Styles

## Introduction

Aspira is a multi-purpose typeface. It is suitable for both text and display use — for graphic design, corporate identity design, magazines, newspapers, books, reports, advertising, signage, etc.

Aspira is a versatile typeface. It offers 112 styles, 8 weights, and 7 widths. It offers 56 upright fonts and 56 italic fonts. It offers lining and oldstyle figures (proportional and tabular). It offers small caps, ligatures, arbitrary fractions, and extensive language support. Aspira is a toolkit for any typographic challenge.

Aspira is a geometric typeface. It offers a fresh geometric personality which is pleasant and not too conspicuous.

Aspira is a multi-width typeface. It offers 7 widths — much more than what is currently usual.

Aspira is a legible typeface. Many of its details, like its open apertures and subtle variations in stroke width, are designed to enhance its legibility.

Aspira introduces an innovative width indication system: XXXNar, XXNar, XNar, Nar, [Normal Width], Wide, XWide.

## Designer

Ben Blom

## Design date

2012-2014

## Width & Weight Spectrum

Each line: Same width, different weights

Aspira XXXNar

aaaaaaaa spectrum

Aspira XXNar

aaaaaaaa spectrum

Aspira XNar

aaaaaaaa spectrum

Aspira Nar

aaaaaaaa spectrum

Aspira  
[Normal Width]

aaaaaaaa spectrum

Aspira Wide

aaaaaaaa spectrum

Aspira XWide

aaaaaaaa spectrum

## Weight & Width Spectrum

Each line: Same weight, different widths

Thin

aaaaaaa spectra

Light

aaaaaaa spectra

Regular

aaaaaaa spectra

Medium

aaaaaaa spectra

Demi

aaaaaaa spectra

Bold

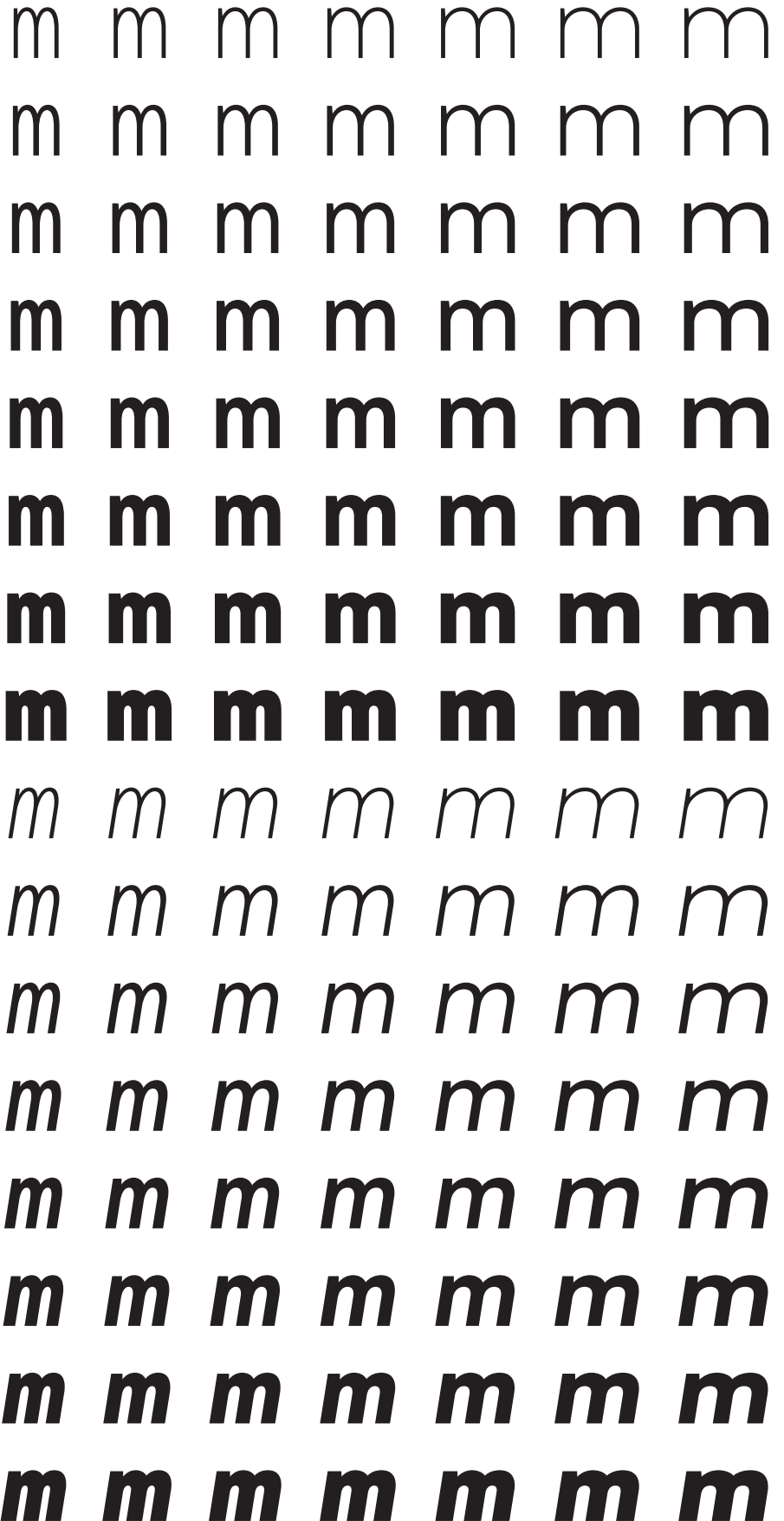
aaaaaaa spectra

Heavy

aaaaaaa spectra

Black

aaaaaaa spectra



Aspira Statistics  
112 fonts  
56 upright fonts  
56 italic fonts  
8 weights, 7 widths  
550 glyphs per font  
61,600 glyphs in total

Aspira XXXNar

Upright Weights

17

Same width, different weights

Hamburgetypes with personality  
Hamburgetypes with personality  
Hamburgetypes with personality  
Hamburgetypes with personality  
Hamburgetypes with personality  
Hamburgetypes with personality  
Hamburgetypes with personality  
Hamburgetypes with personality

Aspira XXXNar

Italic Weights

17

*Hamburgetypes with personality*  
*Hamburgetypes with personality*  
*Hamburgetypes with personality*  
*Hamburgetypes with personality*  
*Hamburgetypes with personality*  
*Hamburgetypes with personality*  
*Hamburgetypes with personality*  
*Hamburgetypes with personality*

Aspira XXNar

Upright Weights

17

All fonts have the same height. The lighter fonts look higher because of an optical illusion.

Hamburgetypes with personality  
Hamburgetypes with personality  
Hamburgetypes with personality  
Hamburgetypes with personality  
Hamburgetypes with personality  
Hamburgetypes with personality  
Hamburgetypes with personality  
Hamburgetypes with personality

Aspira XXNar

Italic Weights

17

*Hamburgetypes with personality*  
*Hamburgetypes with personality*  
*Hamburgetypes with personality*  
*Hamburgetypes with personality*  
*Hamburgetypes with personality*  
*Hamburgetypes with personality*  
*Hamburgetypes with personality*  
*Hamburgetypes with personality*

Aspira XNar  
Upright Weights  
17

Same width, different weights

Hamburgetypes with personality  
Hamburgetypes with personality  
Hamburgetypes with personality  
Hamburgetypes with personality  
Hamburgetypes with personality  
Hamburgetypes with personality  
Hamburgetypes with personality  
Hamburgetypes with personality

Aspira XNar  
Italic Weights  
17

*Hamburgetypes with personality*  
*Hamburgetypes with personality*  
*Hamburgetypes with personality*  
*Hamburgetypes with personality*  
*Hamburgetypes with personality*  
*Hamburgetypes with personality*  
*Hamburgetypes with personality*  
*Hamburgetypes with personality*

Aspira Nar  
Upright Weights  
17

Hamburgetypes with personality  
Hamburgetypes with personality  
Hamburgetypes with personality  
Hamburgetypes with personality  
Hamburgetypes with personality  
Hamburgetypes with personality  
Hamburgetypes with personality  
Hamburgetypes with personality

Aspira Nar  
Italic Weights  
17

*Hamburgetypes with personality*  
*Hamburgetypes with personality*  
*Hamburgetypes with personality*  
*Hamburgetypes with personality*  
*Hamburgetypes with personality*  
*Hamburgetypes with personality*  
*Hamburgetypes with personality*  
*Hamburgetypes with personality*

Aspira

[Normal Width]

Upright Weights

17

Same width, different weights

Hamburgefonts with personality  
Hamburgefonts with personality  
Hamburgefonts with personality  
Hamburgefonts with personality  
Hamburgefonts with personality  
Hamburgefonts with personality  
Hamburgefonts with personality  
Hamburgefonts with personality

Aspira

[Normal Width]

Italic Weights

17

*Hamburgefonts with personality*  
*Hamburgefonts with personality*  
*Hamburgefonts with personality*  
*Hamburgefonts with personality*  
*Hamburgefonts with personality*  
*Hamburgefonts with personality*  
*Hamburgefonts with personality*  
*Hamburgefonts with personality*

Normal width and wider: The eight weights have about the same width.

Narrower widths: The lighter weights are narrower than the heavier ones.

Aspira Wide

Upright Weights

17

Hamburgefonts with personality  
Hamburgefonts with personality  
Hamburgefonts with personality  
Hamburgefonts with personality  
Hamburgefonts with personality  
Hamburgefonts with personality  
Hamburgefonts with personality  
Hamburgefonts with personality

Aspira Wide

Italic Weights

17

*Hamburgefonts with personality*  
*Hamburgefonts with personality*  
*Hamburgefonts with personality*  
*Hamburgefonts with personality*  
*Hamburgefonts with personality*  
*Hamburgefonts with personality*  
*Hamburgefonts with personality*  
*Hamburgefonts with personality*

Aspira XWide  
Upright Weights  
17

Same width, different weights

Hamburgefonts with personality  
Hamburgefonts with personality  
Hamburgefonts with personality  
Hamburgefonts with personality  
Hamburgefonts with personality  
Hamburgefonts with personality  
Hamburgefonts with personality  
Hamburgefonts with personality

Aspira XWide  
Italic Weights  
17

*Hamburgefonts with personality*  
*Hamburgefonts with personality*  
*Hamburgefonts with personality*  
*Hamburgefonts with personality*  
*Hamburgefonts with personality*  
*Hamburgefonts with personality*  
*Hamburgefonts with personality*  
*Hamburgefonts with personality*

56 Upright Fonts

Each column represents a width.  
Each row represents a weight.  
Each cell represents a width/weight  
combination.  
Each cell represents a font.

Aspira XXXNar Regular 9  
Aspira XXXNar Bold 9

	XXXNar	XXNar	XNar	Nar	[Normal]	Wide	XWide
<b>Thin</b>	XXXNar Thin	XXNar Thin	XNar Thin	Nar Thin	Thin	Wide Thin	XWide Thin
<b>Light</b>	XXXNar Light	XXNar Light	XNar Light	Nar Light	Light	Wide Light	XWide Light
<b>Regular</b>	XXXNar Regular	XXNar Regular	XNar Regular	Nar Regular	Regular	Wide Regular	XWide Regular
<b>Medium</b>	XXXNar Medium	XXNar Medium	XNar Medium	Nar Medium	Medium	Wide Medium	XWide Medium
<b>Demi</b>	XXXNar Demi	XXNar Demi	XNar Demi	Nar Demi	Demi	Wide Demi	XWide Demi
<b>Bold</b>	XXXNar Bold	XXNar Bold	XNar Bold	Nar Bold	Bold	Wide Bold	XWide Bold
<b>Heavy</b>	XXXNar Heavy	XXNar Heavy	XNar Heavy	Nar Heavy	Heavy	Wide Heavy	XWide Heavy
<b>Black</b>	XXXNar Black	XXNar Black	XNar Black	Nar Black	Black	Wide Black	XWide Black

Thin

Upright Widths

19.5

Same weight, different widths

Hamburgetypes with personality

Hamburgetypes with personality

Hamburgetypes with personality

Hamburgetypes with personality

Hamburgetypes with personality

Hamburgetypes with personality

Hamburgetypes with personality

Light

Upright Widths

19.5

Hamburgetypes with personality

Hamburgetypes with personality

Hamburgetypes with personality

Hamburgetypes with personality

Hamburgetypes with personality

Hamburgetypes with personality

Hamburgetypes with personality

Regular

Upright Widths

19.5

Hamburgetypes with personality

Hamburgetypes with personality

Hamburgetypes with personality

Hamburgetypes with personality

Hamburgetypes with personality

Hamburgetypes with personality

Hamburgetypes with personality

Medium

Upright Widths

19.5

Hamburgetypes with personality

Hamburgetypes with personality

Hamburgetypes with personality

Hamburgetypes with personality

Hamburgetypes with personality

Hamburgetypes with personality

Hamburgetypes with personality



Demi

Upright Widths

19.5

Same weight, different widths

Hamburgefonts with personality  
Hamburgefonts with personality  
Hamburgefonts with personality  
Hamburgefonts with personality  
Hamburgefonts with personality  
Hamburgefonts with personality  
Hamburgefonts with personality

Bold

Upright Widths

19.5

**Hamburgefonts with personality**  
**Hamburgefonts with personality**  
**Hamburgefonts with personality**  
**Hamburgefonts with personality**  
**Hamburgefonts with personality**  
**Hamburgefonts with personality**  
**Hamburgefonts with personality**

Heavy

Upright Widths

19.5

**Hamburgefonts with personality**  
**Hamburgefonts with personality**  
**Hamburgefonts with personality**  
**Hamburgefonts with personality**  
**Hamburgefonts with personality**  
**Hamburgefonts with personality**  
**Hamburgefonts with personality**

Black

Upright Widths

19.5

**Hamburgefonts with personality**  
**Hamburgefonts with personality**  
**Hamburgefonts with personality**  
**Hamburgefonts with personality**  
**Hamburgefonts with personality**  
**Hamburgefonts with personality**  
**Hamburgefonts with personality**

Aspira Nar Regular

12 Hamburgetypes with personality  
18 Hamburgetypes with personality  
24 Hamburgetypes with personality  
36 Hamburgetypes with  
48 Hamburgetypes  
60 Hamburgetype

Aspira Nar Bold

12 **Hamburgetypes with personality**  
18 **Hamburgetypes with personality**  
24 **Hamburgetypes with personality**  
36 **Hamburgetypes with**  
48 **Hamburgetypes**  
60 **Hamburgetype**

A B C D E F G  
H I J K L M N  
O P Q R S T U  
V W X Y Z a b  
c d e f g h i j k  
l m n o p q r s  
t u v w x y z 0  
1 0 1 2 3 4 5 6  
7 8 9 \$ ¢ € £  
¥ ₺ ₹ ; ! ? & @

A B C D E F G H I

J K L M N O P Q

R S T U V W X Y Z

a b c d e f g h i j

k l m n o p q r s t

u v w x y z 0 1 0 1

2 3 4 5 6 7 8 9 \$ ¢

€ £ ¥ ₪ ₹ ; ! ? & @

### Aspira XWide Thin

Same width, different weights

Epsum factorial non deposit quid pro quo hic escorol. De-  
facto lingo est igpay atinlay. Marquee selectus non provisio  
incongruous feline nolo contendre. Olypian quarrels et go-  
rilla congolium sic ad nauseum. Sic tempus fugit esperanto  
hiccup estrogen. 12/14.4

### Aspira XWide Light

Epsum factorial non deposit quid pro quo hic escorol. De-  
facto lingo est igpay atinlay. Marquee selectus non provisio  
incongruous feline nolo contendre. Olypian quarrels et go-  
rilla congolium sic ad nauseum. Sic tempus fugit esperanto  
hiccup estrogen. 12/14.4

### Aspira XWide Regular

Epsum factorial non deposit quid pro quo hic escorol. De-  
facto lingo est igpay atinlay. Marquee selectus non provisio  
incongruous feline nolo contendre. Olypian quarrels et go-  
rilla congolium sic ad nauseum. Sic tempus fugit esperanto  
hiccup estrogen. 12/14.4

### Aspira XWide Medium

Epsum factorial non deposit quid pro quo hic escorol. De-  
facto lingo est igpay atinlay. Marquee selectus non provisio  
incongruous feline nolo contendre. Olypian quarrels et go-  
rilla congolium sic ad nauseum. Sic tempus fugit esperanto  
hiccup estrogen. 12/14.4

### Aspira XWide Demi

Epsum factorial non deposit quid pro quo hic escorol. De-  
facto lingo est igpay atinlay. Marquee selectus non provi-  
sio incongruous feline nolo contendre. Olypian quarrels et  
gorilla congolium sic ad nauseum. Sic tempus fugit espe-  
ranto hiccup estrogen. 12/14.4

### Aspira XWide Bold

**Epsum factorial non deposit quid pro quo hic escorol. De-  
facto lingo est igpay atinlay. Marquee selectus non provi-  
sio incongruous feline nolo contendre. Olypian quarrels et  
gorilla congolium sic ad nauseum. Sic tempus fugit espe-  
ranto hiccup estrogen. 12/14.4**

### Aspira XWide Heavy

**Epsum factorial non deposit quid pro quo hic escorol. De-  
facto lingo est igpay atinlay. Marquee selectus non provi-  
sio incongruous feline nolo contendre. Olypian quarrels et  
gorilla congolium sic ad nauseum. Sic tempus fugit espe-  
ranto hiccup estrogen. 12/14.4**

### Aspira XWide Black

**Epsum factorial non deposit quid pro quo hic escorol. De-  
facto lingo est igpay atinlay. Marquee selectus non provi-  
sio incongruous feline nolo contendre. Olypian quarrels et  
gorilla congolium sic ad nauseum. Sic tempus fugit espe-  
ranto hiccup estrogen. 12/14.4**

### Aspira Wide Thin

Same width, different weights

Esium factorial non deposit quid pro quo hic escorol. De-  
facto lingo est igpay atinlay. Marquee selectus non provisio  
incongruous feline nolo contendre. Olypian quarrels et gorilla  
congolium sic ad nauseum. Sic tempus fugit esperanto hiccup  
estrogen. 12/14.4

### Aspira Wide Light

Esium factorial non deposit quid pro quo hic escorol. De-  
facto lingo est igpay atinlay. Marquee selectus non provisio  
incongruous feline nolo contendre. Olypian quarrels et gorilla  
congolium sic ad nauseum. Sic tempus fugit esperanto hiccup  
estrogen. 12/14.4

### Aspira Wide Regular

Esium factorial non deposit quid pro quo hic escorol. De-  
facto lingo est igpay atinlay. Marquee selectus non provisio  
incongruous feline nolo contendre. Olypian quarrels et gorilla  
congolium sic ad nauseum. Sic tempus fugit esperanto hiccup  
estrogen. 12/14.4

### Aspira Wide Medium

Esium factorial non deposit quid pro quo hic escorol. De-  
facto lingo est igpay atinlay. Marquee selectus non provisio  
incongruous feline nolo contendre. Olypian quarrels et gorilla  
congolium sic ad nauseum. Sic tempus fugit esperanto hiccup  
estrogen. 12/14.4

### Aspira Wide Demi

Esium factorial non deposit quid pro quo hic escorol. De-  
facto lingo est igpay atinlay. Marquee selectus non provisio  
incongruous feline nolo contendre. Olypian quarrels et gorilla  
congolium sic ad nauseum. Sic tempus fugit esperanto hiccup  
estrogen. 12/14.4

### Aspira Wide Bold

Esium factorial non deposit quid pro quo hic escorol. De-  
facto lingo est igpay atinlay. Marquee selectus non provisio  
incongruous feline nolo contendre. Olypian quarrels et gorilla  
congolium sic ad nauseum. Sic tempus fugit esperanto hiccup  
estrogen. 12/14.4

### Aspira Wide Heavy

Esium factorial non deposit quid pro quo hic escorol. De-  
facto lingo est igpay atinlay. Marquee selectus non provisio  
incongruous feline nolo contendre. Olypian quarrels et gorilla  
congolium sic ad nauseum. Sic tempus fugit esperanto hiccup  
estrogen. 12/14.4

### Aspira Wide Black

Esium factorial non deposit quid pro quo hic escorol. De-  
facto lingo est igpay atinlay. Marquee selectus non provisio  
incongruous feline nolo contendre. Olypian quarrels et go-  
rilla congolium sic ad nauseum. Sic tempus fugit esperanto  
hiccup estrogen. 12/14.4

### Aspira Thin

Same width, different weights

Epsum factorial non deposit quid pro quo hic escorol. Defacto lingo est igpay atinlay. Marquee selectus non provisio incongruous feline nolo contendre. Olypian quarrels et gorilla congolium sic ad nauseum. Sic tempus fugit esperanto hiccup estrogen. Quote meon an estimate et non interruptus stadium. 12/14.4

### Aspira Light

Epsum factorial non deposit quid pro quo hic escorol. Defacto lingo est igpay atinlay. Marquee selectus non provisio incongruous feline nolo contendre. Olypian quarrels et gorilla congolium sic ad nauseum. Sic tempus fugit esperanto hiccup estrogen. Quote meon an estimate et non interruptus stadium. 12/14.4

### Aspira Regular

Epsum factorial non deposit quid pro quo hic escorol. Defacto lingo est igpay atinlay. Marquee selectus non provisio incongruous feline nolo contendre. Olypian quarrels et gorilla congolium sic ad nauseum. Sic tempus fugit esperanto hiccup estrogen. Quote meon an estimate et non interruptus stadium. 12/14.4

### Aspira Medium

Epsum factorial non deposit quid pro quo hic escorol. Defacto lingo est igpay atinlay. Marquee selectus non provisio incongruous feline nolo contendre. Olypian quarrels et gorilla congolium sic ad nauseum. Sic tempus fugit esperanto hiccup estrogen. Quote meon an estimate et non interruptus stadium. 12/14.4

### Aspira Demi

Epsum factorial non deposit quid pro quo hic escorol. Defacto lingo est igpay atinlay. Marquee selectus non provisio incongruous feline nolo contendre. Olypian quarrels et gorilla congolium sic ad nauseum. Sic tempus fugit esperanto hiccup estrogen. Quote meon an estimate et non interruptus stadium. 12/14.4

### Aspira Bold

**Epsum factorial non deposit quid pro quo hic escorol. Defacto lingo est igpay atinlay. Marquee selectus non provisio incongruous feline nolo contendre. Olypian quarrels et gorilla congolium sic ad nauseum. Sic tempus fugit esperanto hiccup estrogen. Quote meon an estimate et non interruptus stadium. 12/14.4**

### Aspira Heavy

**Epsum factorial non deposit quid pro quo hic escorol. Defacto lingo est igpay atinlay. Marquee selectus non provisio incongruous feline nolo contendre. Olypian quarrels et gorilla congolium sic ad nauseum. Sic tempus fugit esperanto hiccup estrogen. Quote meon an estimate et non interruptus stadium. 12/14.4**

### Aspira Black

**Epsum factorial non deposit quid pro quo hic escorol. Defacto lingo est igpay atinlay. Marquee selectus non provisio incongruous feline nolo contendre. Olypian quarrels et gorilla congolium sic ad nauseum. Sic tempus fugit esperanto hiccup estrogen. Quote meon an estimate et non interruptus stadium. 12/14.4**

### Aspira Nar Thin

Same width, different weights

Esium factorial non deposit quid pro quo hic escorol. Defacto lingo est igpay atinlay. Marquee selectus non provisio incongruous feline nolo contendre. Olypian quarrels et gorilla congolium sic ad nauseum. Sic tempus fugit esperanto hiccup estrogen. Quote meon an estimate et non interruptus stadium. 12/14.4

### Aspira Nar Light

Esium factorial non deposit quid pro quo hic escorol. Defacto lingo est igpay atinlay. Marquee selectus non provisio incongruous feline nolo contendre. Olypian quarrels et gorilla congolium sic ad nauseum. Sic tempus fugit esperanto hiccup estrogen. Quote meon an estimate et non interruptus stadium. 12/14.4

### Aspira Nar Regular

Esium factorial non deposit quid pro quo hic escorol. Defacto lingo est igpay atinlay. Marquee selectus non provisio incongruous feline nolo contendre. Olypian quarrels et gorilla congolium sic ad nauseum. Sic tempus fugit esperanto hiccup estrogen. Quote meon an estimate et non interruptus stadium. 12/14.4

### Aspira Nar Medium

Esium factorial non deposit quid pro quo hic escorol. Defacto lingo est igpay atinlay. Marquee selectus non provisio incongruous feline nolo contendre. Olypian quarrels et gorilla congolium sic ad nauseum. Sic tempus fugit esperanto hiccup estrogen. Quote meon an estimate et non interruptus stadium. 12/14.4

### Aspira Nar Demi

Esium factorial non deposit quid pro quo hic escorol. Defacto lingo est igpay atinlay. Marquee selectus non provisio incongruous feline nolo contendre. Olypian quarrels et gorilla congolium sic ad nauseum. Sic tempus fugit esperanto hiccup estrogen. Quote meon an estimate et non interruptus stadium. 12/14.4

### Aspira Nar Bold

**Esium factorial non deposit quid pro quo hic escorol. Defacto lingo est igpay atinlay. Marquee selectus non provisio incongruous feline nolo contendre. Olypian quarrels et gorilla congolium sic ad nauseum. Sic tempus fugit esperanto hiccup estrogen. Quote meon an estimate et non interruptus stadium. 12/14.4**

### Aspira Nar Heavy

**Esium factorial non deposit quid pro quo hic escorol. Defacto lingo est igpay atinlay. Marquee selectus non provisio incongruous feline nolo contendre. Olypian quarrels et gorilla congolium sic ad nauseum. Sic tempus fugit esperanto hiccup estrogen. Quote meon an estimate et non interruptus stadium. 12/14.4**

### Aspira Nar Black

**Esium factorial non deposit quid pro quo hic escorol. Defacto lingo est igpay atinlay. Marquee selectus non provisio incongruous feline nolo contendre. Olypian quarrels et gorilla congolium sic ad nauseum. Sic tempus fugit esperanto hiccup estrogen. Quote meon an estimate et non interruptus stadium. 12/14.4**



### Aspira XNar Thin

Same width, different weights

Epsum factorial non deposit quid pro quo hic escorol. Defacto lingo est igpay atinlay. Marquee selectus non provisio incongruous feline nolo contendre. Olypian quarrels et gorilla congolium sic ad nauseum. Sic tempus fugit esperanto hiccup estrogen. Quote meon an estimate et non interruptus stadium. 12/14.4

### Aspira XNar Light

Epsum factorial non deposit quid pro quo hic escorol. Defacto lingo est igpay atinlay. Marquee selectus non provisio incongruous feline nolo contendre. Olypian quarrels et gorilla congolium sic ad nauseum. Sic tempus fugit esperanto hiccup estrogen. Quote meon an estimate et non interruptus stadium. 12/14.4

### Aspira XNar Regular

Epsum factorial non deposit quid pro quo hic escorol. Defacto lingo est igpay atinlay. Marquee selectus non provisio incongruous feline nolo contendre. Olypian quarrels et gorilla congolium sic ad nauseum. Sic tempus fugit esperanto hiccup estrogen. Quote meon an estimate et non interruptus stadium. 12/14.4

### Aspira XNar Medium

Epsum factorial non deposit quid pro quo hic escorol. Defacto lingo est igpay atinlay. Marquee selectus non provisio incongruous feline nolo contendre. Olypian quarrels et gorilla congolium sic ad nauseum. Sic tempus fugit esperanto hiccup estrogen. Quote meon an estimate et non interruptus stadium. 12/14.4

### Aspira XNar Demi

Epsum factorial non deposit quid pro quo hic escorol. Defacto lingo est igpay atinlay. Marquee selectus non provisio incongruous feline nolo contendre. Olypian quarrels et gorilla congolium sic ad nauseum. Sic tempus fugit esperanto hiccup estrogen. Quote meon an estimate et non interruptus stadium. 12/14.4

### Aspira XNar Bold

**Epsum factorial non deposit quid pro quo hic escorol. Defacto lingo est igpay atinlay. Marquee selectus non provisio incongruous feline nolo contendre. Olypian quarrels et gorilla congolium sic ad nauseum. Sic tempus fugit esperanto hiccup estrogen. Quote meon an estimate et non interruptus stadium. 12/14.4**

### Aspira XNar Heavy

**Epsum factorial non deposit quid pro quo hic escorol. Defacto lingo est igpay atinlay. Marquee selectus non provisio incongruous feline nolo contendre. Olypian quarrels et gorilla congolium sic ad nauseum. Sic tempus fugit esperanto hiccup estrogen. Quote meon an estimate et non interruptus stadium. 12/14.4**

### Aspira XNar Black

**Epsum factorial non deposit quid pro quo hic escorol. Defacto lingo est igpay atinlay. Marquee selectus non provisio incongruous feline nolo contendre. Olypian quarrels et gorilla congolium sic ad nauseum. Sic tempus fugit esperanto hiccup estrogen. Quote meon an estimate et non interruptus stadium. 12/14.4**

### Aspira XXNar Thin

Same width, different weights

Epsum factorial non deposit quid pro quo hic escorol. Defacto lingo est igpay atinlay. Marquee selectus non provisio incongruous feline nolo contendre. Olypian quarrels et gorilla congolium sic ad nauseum. Sic tempus fugit esperanto hiccup estrogen. Quote meon an estimate et non interruptus stadium. 12/14.4

### Aspira XXNar Light

Epsum factorial non deposit quid pro quo hic escorol. Defacto lingo est igpay atinlay. Marquee selectus non provisio incongruous feline nolo contendre. Olypian quarrels et gorilla congolium sic ad nauseum. Sic tempus fugit esperanto hiccup estrogen. Quote meon an estimate et non interruptus stadium. 12/14.4

### Aspira XXNar Regular

Epsum factorial non deposit quid pro quo hic escorol. Defacto lingo est igpay atinlay. Marquee selectus non provisio incongruous feline nolo contendre. Olypian quarrels et gorilla congolium sic ad nauseum. Sic tempus fugit esperanto hiccup estrogen. Quote meon an estimate et non interruptus stadium. 12/14.4

### Aspira XXNar Medium

Epsum factorial non deposit quid pro quo hic escorol. Defacto lingo est igpay atinlay. Marquee selectus non provisio incongruous feline nolo contendre. Olypian quarrels et gorilla congolium sic ad nauseum. Sic tempus fugit esperanto hiccup estrogen. Quote meon an estimate et non interruptus stadium. 12/14.4

### Aspira XXNar Demi

Epsum factorial non deposit quid pro quo hic escorol. Defacto lingo est igpay atinlay. Marquee selectus non provisio incongruous feline nolo contendre. Olypian quarrels et gorilla congolium sic ad nauseum. Sic tempus fugit esperanto hiccup estrogen. Quote meon an estimate et non interruptus stadium. 12/14.4

### Aspira XXNar Bold

**Epsum factorial non deposit quid pro quo hic escorol. Defacto lingo est igpay atinlay. Marquee selectus non provisio incongruous feline nolo contendre. Olypian quarrels et gorilla congolium sic ad nauseum. Sic tempus fugit esperanto hiccup estrogen. Quote meon an estimate et non interruptus stadium. 12/14.4**

### Aspira XXNar Heavy

**Epsum factorial non deposit quid pro quo hic escorol. Defacto lingo est igpay atinlay. Marquee selectus non provisio incongruous feline nolo contendre. Olypian quarrels et gorilla congolium sic ad nauseum. Sic tempus fugit esperanto hiccup estrogen. Quote meon an estimate et non interruptus stadium. 12/14.4**

### Aspira XXNar Black

**Epsum factorial non deposit quid pro quo hic escorol. Defacto lingo est igpay atinlay. Marquee selectus non provisio incongruous feline nolo contendre. Olypian quarrels et gorilla congolium sic ad nauseum. Sic tempus fugit esperanto hiccup estrogen. Quote meon an estimate et non interruptus stadium. 12/14.4**

### Aspira XXXNar Thin

Same width, different weights

Epsum factorial non deposit quid pro quo hic escorol. Defacto lingo est igpay atinlay. Marquee selectus non provisio incongruous feline nolo contendre. Olypian quarrels et gorilla congolium sic ad nauseum. Sic tempus fugit esperanto hiccup estrogen. Quote meon an estimate et non interruptus stadium. 12/14.4

### Aspira XXXNar Light

Epsum factorial non deposit quid pro quo hic escorol. Defacto lingo est igpay atinlay. Marquee selectus non provisio incongruous feline nolo contendre. Olypian quarrels et gorilla congolium sic ad nauseum. Sic tempus fugit esperanto hiccup estrogen. Quote meon an estimate et non interruptus stadium. 12/14.4

### Aspira XXXNar Regular

Epsum factorial non deposit quid pro quo hic escorol. Defacto lingo est igpay atinlay. Marquee selectus non provisio incongruous feline nolo contendre. Olypian quarrels et gorilla congolium sic ad nauseum. Sic tempus fugit esperanto hiccup estrogen. Quote meon an estimate et non interruptus stadium. 12/14.4

### Aspira XXXNar Medium

Epsum factorial non deposit quid pro quo hic escorol. Defacto lingo est igpay atinlay. Marquee selectus non provisio incongruous feline nolo contendre. Olypian quarrels et gorilla congolium sic ad nauseum. Sic tempus fugit esperanto hiccup estrogen. Quote meon an estimate et non interruptus stadium. 12/14.4

### Aspira XXXNar Demi

Epsum factorial non deposit quid pro quo hic escorol. Defacto lingo est igpay atinlay. Marquee selectus non provisio incongruous feline nolo contendre. Olypian quarrels et gorilla congolium sic ad nauseum. Sic tempus fugit esperanto hiccup estrogen. Quote meon an estimate et non interruptus stadium. 12/14.4

### Aspira XXXNar Bold

**Epsum factorial non deposit quid pro quo hic escorol. Defacto lingo est igpay atinlay. Marquee selectus non provisio incongruous feline nolo contendre. Olypian quarrels et gorilla congolium sic ad nauseum. Sic tempus fugit esperanto hiccup estrogen. Quote meon an estimate et non interruptus stadium. 12/14.4**

### Aspira XXXNar Heavy

**Epsum factorial non deposit quid pro quo hic escorol. Defacto lingo est igpay atinlay. Marquee selectus non provisio incongruous feline nolo contendre. Olypian quarrels et gorilla congolium sic ad nauseum. Sic tempus fugit esperanto hiccup estrogen. Quote meon an estimate et non interruptus stadium. 12/14.4**

### Aspira XXXNar Black

**Epsum factorial non deposit quid pro quo hic escorol. Defacto lingo est igpay atinlay. Marquee selectus non provisio incongruous feline nolo contendre. Olypian quarrels et gorilla congolium sic ad nauseum. Sic tempus fugit esperanto hiccup estrogen. Quote meon an estimate et non interruptus stadium. 12/14.4**

## Aspira XWide Medium

Same weight, different widths

Epsum factorial non deposit quid pro quo hic escorol. De-  
facto lingo est igpay atinlay. Marquee selectus non provisio  
incongruous feline nolo contendre. Olypian quarrels et go-  
rilla congolium sic ad nauseum. Sic tempus fugit esperanto  
hiccup estrogen. Quote meon an estimate et non interrup-  
tus stadium. 12/14.4

## Aspira Wide Medium

Epsum factorial non deposit quid pro quo hic escorol. De-  
facto lingo est igpay atinlay. Marquee selectus non provisio  
incongruous feline nolo contendre. Olypian quarrels et go-  
rilla congolium sic ad nauseum. Sic tempus fugit esperanto  
hiccup estrogen. Quote meon an estimate et non interrup-  
tus stadium. 12/14.4

## Aspira Medium

Epsum factorial non deposit quid pro quo hic escorol. De-  
facto lingo est igpay atinlay. Marquee selectus non provisio  
incongruous feline nolo contendre. Olypian quarrels et go-  
rilla congolium sic ad nauseum. Sic tempus fugit esperanto  
hiccup estrogen. Quote meon an estimate et non interrup-  
tus stadium. 12/14.4

## Aspira Nar Medium

Epsum factorial non deposit quid pro quo hic escorol. De-  
facto lingo est igpay atinlay. Marquee selectus non provisio  
incongruous feline nolo contendre. Olypian quarrels et go-  
rilla congolium sic ad nauseum. Sic tempus fugit esperanto  
hiccup estrogen. Quote meon an estimate et non interrup-  
tus stadium. 12/14.4

## Aspira XNar Medium

Epsum factorial non deposit quid pro quo hic escorol. De-  
facto lingo est igpay atinlay. Marquee selectus non provisio  
incongruous feline nolo contendre. Olypian quarrels et go-  
rilla congolium sic ad nauseum. Sic tempus fugit esperanto  
hiccup estrogen. Quote meon an estimate et non interrup-  
tus stadium. 12/14.4

## Aspira XXNar Medium

Epsum factorial non deposit quid pro quo hic escorol. De-  
facto lingo est igpay atinlay. Marquee selectus non provisio  
incongruous feline nolo contendre. Olypian quarrels et go-  
rilla congolium sic ad nauseum. Sic tempus fugit esperanto  
hiccup estrogen. Quote meon an estimate et non interruptus  
stadium. 12/14.4

## Aspira XXXNar Medium

Epsum factorial non deposit quid pro quo hic escorol. De-  
facto lingo est igpay atinlay. Marquee selectus non provisio  
incongruous feline nolo contendre. Olypian quarrels et gorilla  
congolium sic ad nauseum. Sic tempus fugit esperanto hiccup  
estrogen. Quote meon an estimate et non interruptus stadium.  
12/14.4

Aspira XWide Medium Italic

Same weight, different widths

*Epsum factorial non deposit quid pro quo hic escolol. De-  
facto lingo est igpay atinlay. Marquee selectus non provisio  
incongruous feline nolo contendre. Olypian quarrels et go-  
rilla congolium sic ad nauseum. Sic tempus fugit esperanto  
hiccup estrogen. Quote meon an estimate et non interrup-  
tus stadium. 12/14.4*

Aspira Wide Medium Italic

*Epsum factorial non deposit quid pro quo hic escolol. De-  
facto lingo est igpay atinlay. Marquee selectus non provisio  
incongruous feline nolo contendre. Olypian quarrels et go-  
rilla congolium sic ad nauseum. Sic tempus fugit esperanto  
hiccup estrogen. Quote meon an estimate et non interrup-  
tus stadium. 12/14.4*

Aspira Medium Italic

*Epsum factorial non deposit quid pro quo hic escolol. De-  
facto lingo est igpay atinlay. Marquee selectus non provisio  
incongruous feline nolo contendre. Olypian quarrels et go-  
rilla congolium sic ad nauseum. Sic tempus fugit esperanto  
hiccup estrogen. Quote meon an estimate et non interrup-  
tus stadium. 12/14.4*

Aspira Nar Medium Italic

*Epsum factorial non deposit quid pro quo hic escolol. De-  
facto lingo est igpay atinlay. Marquee selectus non provisio  
incongruous feline nolo contendre. Olypian quarrels et go-  
rilla congolium sic ad nauseum. Sic tempus fugit esperanto  
hiccup estrogen. Quote meon an estimate et non interrup-  
tus stadium. 12/14.4*

Aspira XNar Medium Italic

*Epsum factorial non deposit quid pro quo hic escolol. De-  
facto lingo est igpay atinlay. Marquee selectus non provisio  
incongruous feline nolo contendre. Olypian quarrels et go-  
rilla congolium sic ad nauseum. Sic tempus fugit esperanto  
hiccup estrogen. Quote meon an estimate et non interrup-  
tus stadium. 12/14.4*

Aspira XXNar Medium Italic

*Epsum factorial non deposit quid pro quo hic escolol. De-  
facto lingo est igpay atinlay. Marquee selectus non provisio  
incongruous feline nolo contendre. Olypian quarrels et go-  
rilla congolium sic ad nauseum. Sic tempus fugit esperanto  
hiccup estrogen. Quote meon an estimate et non interruptus  
stadium. 12/14.4*

Aspira XXXNar Medium Italic

*Epsum factorial non deposit quid pro quo hic escolol. De-  
facto lingo est igpay atinlay. Marquee selectus non provisio  
incongruous feline nolo contendre. Olypian quarrels et gorilla  
congolium sic ad nauseum. Sic tempus fugit esperanto hiccup  
estrogen. Quote meon an estimate et non interruptus stadium.  
12/14.4*

## Aspira Light

Bolded text:  
Aspira Demi

Proportional lining  
numerals in text

THIS DESCRIPTION OF THESE BAS-RELIEFS, which are usually painted, will give an idea of the great works of Egyptian sculptors.

The representation of the animals in these sculptures is as successful as any part of them. There being no intellectual expression required, they are more pleasing than the human beings, with their set, unchanging features and expression. The Egyptians had several breeds of dogs, and the picture here (Fig. 2) is made up from the dogs found in the sculptures—No. 1, hound; 2, mastiff; 3, turnspit; 4, 5, fox-dogs; 6, 7, greyhounds.

One of the figures often repeated by the sculptors of Egypt was the Sphinx. **The colossal and most famous one** (Fig. 5) is not far from the great pyramid, and has the form of a recumbent lion with a human head. It is one hundred and seventy-two feet long, and is the Sphinx of the world; but there were great numbers of these strange figures in Egypt—in some cases there were avenues leading to the temples bordered by them on each side. The form of the Sphinx was intended to *express some spiritual thought* to the Egyptians, and the stories about it are very interesting. Its form certainly denotes the *union of physical and mental power*.

The form of **the great Sphinx** is called the *androsphinx* (Fig. 3). Another has the body of the lion with the head of the ram, and is called the *kriosphinx* (Fig. 4); still another has the same body and the head of a hawk; this is called the *hieracosphinx* (Fig. 6).

The colossal statues of Egypt are very wonderful on account of their vast weight and size. The most famous are two which stand on the west bank of the Nile at Thebes (Fig. 7). Each of these colossi is made from a single block of stone such as is not found within several days' journey of the place where they stand. 11/13.2

## Aspira XXNar Light

Bolded text:  
Aspira XXNar Demi

THIS DESCRIPTION OF THESE BAS-RELIEFS, which are usually painted, will give an idea of the great works of Egyptian sculptors.

The representation of the animals in these sculptures is as successful as any part of them. There being no intellectual expression required, they are more pleasing than the human beings, with their set, unchanging features and expression. The Egyptians had several breeds of dogs, and the picture here (Fig. 2) is made up from the dogs found in the sculptures—No. 1, hound; 2, mastiff; 3, turnspit; 4, 5, fox-dogs; 6, 7, greyhounds.

One of the figures often repeated by the sculptors of Egypt was the Sphinx. **The colossal and most famous one** (Fig. 5) is not far from the great pyramid, and has the form of a recumbent lion with a human head. It is one hundred and seventy-two feet long, and is the Sphinx of the world; but there were great numbers of these strange figures in Egypt—in some cases there were avenues leading to the temples bordered by them on each side. The form of the Sphinx was intended to *express some spiritual thought* to the Egyptians, and the stories about it are very interesting. Its form certainly denotes the *union of physical and mental power*.

The form of **the great Sphinx** is called the *androsphinx* (Fig. 3). Another has the body of the lion with the head of the ram, and is called the *kriosphinx* (Fig. 4); still another has the same body and the head of a hawk; this is called the *hieracosphinx* (Fig. 6).

The colossal statues of Egypt are very wonderful on account of their vast weight and size. The most famous are two which stand on the west bank of the Nile at Thebes (Fig. 7). Each of these colossi is made from a single block of stone such as is not found within several days' journey of the place where they stand. 11/13.2

THIS DESCRIPTION OF THESE BAS-RELIEFS, which are usually painted, will give an idea of the great works of Egyptian sculptors.

The representation of the animals in these sculptures is as successful as any part of them. There being no intellectual expression required, they are more pleasing than the human beings, with their set, unchanging features and expression. The Egyptians had several breeds of dogs, and the picture here (Fig. 2) is made up from the dogs found in the sculptures—No. 1, hound; 2, mastiff; 3, turnspit; 4, 5, fox-dogs; 6, 7, greyhounds.

One of the figures often repeated by the sculptors of Egypt was the Sphinx. **The colossal and most famous one** (Fig. 5) is not far from the great pyramid, and has the form of a recumbent lion with a human head. It is one hundred and seventy-two feet long, and is the Sphinx of the world; but there were great numbers of these strange figures in Egypt—in some cases there were avenues leading to the temples bordered by them on each side. The form of the Sphinx was intended to *express some spiritual thought* to the Egyptians, and the stories about it are very interesting. Its form certainly denotes the *union of physical and mental power*.

The form of **the great Sphinx** is called the *androsphinx* (Fig. 3). Another has the body of the lion with the head of the ram, and is called the *kriosphinx* (Fig. 4); still another has the same body and the head of a hawk; this is called the *hieracosphinx* (Fig. 6).

The colossal statues of Egypt are very wonderful on account of their vast weight and size. The most famous are two which stand on the west bank of the Nile at Thebes (Fig. 7). Each of these colossi is made from a single block of stone such as is not found within several days' journey of the place where they stand. 11/13.2

THIS DESCRIPTION OF THESE BAS-RELIEFS, which are usually painted, will give an idea of the great works of Egyptian sculptors.

The representation of the animals in these sculptures is as successful as any part of them. There being no intellectual expression required, they are more pleasing than the human beings, with their set, unchanging features and expression. The Egyptians had several breeds of dogs, and the picture here (Fig. 2) is made up from the dogs found in the sculptures—No. 1, hound; 2, mastiff; 3, turnspit; 4, 5, fox-dogs; 6, 7, greyhounds.

One of the figures often repeated by the sculptors of Egypt was the Sphinx. **The colossal and most famous one** (Fig. 5) is not far from the great pyramid, and has the form of a recumbent lion with a human head. It is one hundred and seventy-two feet long, and is the Sphinx of the world; but there were great numbers of these strange figures in Egypt—in some cases there were avenues leading to the temples bordered by them on each side. The form of the Sphinx was intended to *express some spiritual thought* to the Egyptians, and the stories about it are very interesting. Its form certainly denotes the *union of physical and mental power*.

The form of **the great Sphinx** is called the *androsphinx* (Fig. 3). Another has the body of the lion with the head of the ram, and is called the *kriosphinx* (Fig. 4); still another has the same body and the head of a hawk; this is called the *hieracosphinx* (Fig. 6).

The colossal statues of Egypt are very wonderful on account of their vast weight and size. The most famous are two which stand on the west bank of the Nile at Thebes (Fig. 7). Each of these colossi is made from a single block of stone such as is not found within several days' journey of the place where they stand. 11/13.2

**THIS DESCRIPTION OF THESE BAS-RELIEFS**, which are usually painted, will give an idea of the great works of Egyptian sculptors.

The representation of the animals in these sculptures is as successful as any part of them. There being no intellectual expression required, they are more pleasing than the human beings, with their set, unchanging features and expression. The Egyptians had several breeds of dogs, and the picture here (Fig. 2) is made up from the dogs found in the sculptures—No. 1, hound; 2, mastiff; 3, turnspit; 4, 5, fox-dogs; 6, 7, greyhounds.

One of the figures often repeated by the sculptors of Egypt was the Sphinx. **The colossal and most famous one** (Fig. 5) is not far from the great pyramid, and has the form of a recumbent lion with a human head. It is one hundred and seventy-two feet long, and is the Sphinx of the world; but there were great numbers of these strange figures in Egypt—in some cases there were avenues leading to the temples bordered by them on each side. The form of the Sphinx was intended to *express some spiritual thought* to the Egyptians, and the stories about it are very interesting. Its form certainly denotes the *union of physical and mental power*.

The form of **the great Sphinx** is called the *androsphinx* (Fig. 3). Another has the body of the lion with the head of the ram, and is called the *kriosphinx* (Fig. 4); still another has the same body and the head of a hawk; this is called the *hieracosphinx* (Fig. 6).

The colossal statues of Egypt are very wonderful on account of their vast weight and size. The most famous are two which stand on the west bank of the Nile at Thebes (Fig. 7). Each of these colossi is made from a single block of stone such as is not found within several days' journey of the place where they stand. 11/13.2

**THIS DESCRIPTION OF THESE BAS-RELIEFS**, which are usually painted, will give an idea of the great works of Egyptian sculptors.

The representation of the animals in these sculptures is as successful as any part of them. There being no intellectual expression required, they are more pleasing than the human beings, with their set, unchanging features and expression. The Egyptians had several breeds of dogs, and the picture here (Fig. 2) is made up from the dogs found in the sculptures—No. 1, hound; 2, mastiff; 3, turnspit; 4, 5, fox-dogs; 6, 7, greyhounds.

One of the figures often repeated by the sculptors of Egypt was the Sphinx. **The colossal and most famous one** (Fig. 5) is not far from the great pyramid, and has the form of a recumbent lion with a human head. It is one hundred and seventy-two feet long, and is the Sphinx of the world; but there were great numbers of these strange figures in Egypt—in some cases there were avenues leading to the temples bordered by them on each side. The form of the Sphinx was intended to *express some spiritual thought* to the Egyptians, and the stories about it are very interesting. Its form certainly denotes the *union of physical and mental power*.

The form of **the great Sphinx** is called the *androsphinx* (Fig. 3). Another has the body of the lion with the head of the ram, and is called the *kriosphinx* (Fig. 4); still another has the same body and the head of a hawk; this is called the *hieracosphinx* (Fig. 6).

The colossal statues of Egypt are very wonderful on account of their vast weight and size. The most famous are two which stand on the west bank of the Nile at Thebes (Fig. 7). Each of these colossi is made from a single block of stone such as is not found within several days' journey of the place where they stand. 11/13.2



Aspira XXNar Light  
Aspira Light

Proportional oldstyle  
numerals in text

The Second Pyramid, which stands to the north-east of the Third, was a square of seven hundred and seven feet each way, and thus covered an area of almost eleven acres and a half, or nearly double that of the greatest building which Rome ever produced—the Coliseum. The sides rose at an angle of  $52^{\circ} 10'$ ; and the perpendicular height was four hundred and fifty-four feet, or fifty feet more than that of the spire of Salisbury Cathedral. The cubic contents are estimated at 71,670,000 feet; and their weight is calculated at 5,309,000 tons. Numbers like this, require to be made intelligible by comparisons. 10/12

The Second Pyramid, which stands to the north-east of the Third, was a square of seven hundred and seven feet each way, and thus covered an area of almost eleven acres and a half, or nearly double that of the greatest building which Rome ever produced—the Coliseum. The sides rose at an angle of  $52^{\circ} 10'$ ; and the perpendicular height was four hundred and fifty-four feet, or fifty feet more than that of the spire of Salisbury Cathedral. The cubic contents are estimated at 71,670,000 feet; and their weight is calculated at 5,309,000 tons. Numbers like this, require to be made intelligible by comparisons. 10/12

Aspira XXNar Regular  
Aspira Regular

The Second Pyramid, which stands to the north-east of the Third, was a square of seven hundred and seven feet each way, and thus covered an area of almost eleven acres and a half, or nearly double that of the greatest building which Rome ever produced—the Coliseum. The sides rose at an angle of  $52^{\circ} 10'$ ; and the perpendicular height was four hundred and fifty-four feet, or fifty feet more than that of the spire of Salisbury Cathedral. The cubic contents are estimated at 71,670,000 feet; and their weight is calculated at 5,309,000 tons. Numbers like this, require to be made intelligible by comparisons. 10/12

The Second Pyramid, which stands to the north-east of the Third, was a square of seven hundred and seven feet each way, and thus covered an area of almost eleven acres and a half, or nearly double that of the greatest building which Rome ever produced—the Coliseum. The sides rose at an angle of  $52^{\circ} 10'$ ; and the perpendicular height was four hundred and fifty-four feet, or fifty feet more than that of the spire of Salisbury Cathedral. The cubic contents are estimated at 71,670,000 feet; and their weight is calculated at 5,309,000 tons. Numbers like this, require to be made intelligible by comparisons. 10/12

Aspira XXNar Medium  
Aspira Medium

The Second Pyramid, which stands to the north-east of the Third, was a square of seven hundred and seven feet each way, and thus covered an area of almost eleven acres and a half, or nearly double that of the greatest building which Rome ever produced—the Coliseum. The sides rose at an angle of  $52^{\circ} 10'$ ; and the perpendicular height was four hundred and fifty-four feet, or fifty feet more than that of the spire of Salisbury Cathedral. The cubic contents are estimated at 71,670,000 feet; and their weight is calculated at 5,309,000 tons. Numbers like this, require to be made intelligible by comparisons. 10/12

The Second Pyramid, which stands to the north-east of the Third, was a square of seven hundred and seven feet each way, and thus covered an area of almost eleven acres and a half, or nearly double that of the greatest building which Rome ever produced—the Coliseum. The sides rose at an angle of  $52^{\circ} 10'$ ; and the perpendicular height was four hundred and fifty-four feet, or fifty feet more than that of the spire of Salisbury Cathedral. The cubic contents are estimated at 71,670,000 feet; and their weight is calculated at 5,309,000 tons. Numbers like this, require to be made intelligible by comparisons. 10/12

Aspira XXNar Light  
Aspira Light

The Second Pyramid, which stands to the north-east of the Third, was a square of seven hundred and seven feet each way, and thus covered an area of almost eleven acres and a half, or nearly double that of the greatest building which Rome ever produced—the Coliseum. The sides rose at an angle of  $52^{\circ} 10'$ ; and the perpendicular height was four hundred and fifty-four feet, or fifty feet more than that of the spire of Salisbury Cathedral. The cubic contents are estimated at 71,670,000 feet; and their weight is calculated at 5,309,000 tons. Numbers like this, require to be made intelligible by comparisons. 9/10.8

The Second Pyramid, which stands to the north-east of the Third, was a square of seven hundred and seven feet each way, and thus covered an area of almost eleven acres and a half, or nearly double that of the greatest building which Rome ever produced—the Coliseum. The sides rose at an angle of  $52^{\circ} 10'$ ; and the perpendicular height was four hundred and fifty-four feet, or fifty feet more than that of the spire of Salisbury Cathedral. The cubic contents are estimated at 71,670,000 feet; and their weight is calculated at 5,309,000 tons. Numbers like this, require to be made intelligible by comparisons. 9/10.8

Aspira XXNar Regular  
Aspira Regular

The Second Pyramid, which stands to the north-east of the Third, was a square of seven hundred and seven feet each way, and thus covered an area of almost eleven acres and a half, or nearly double that of the greatest building which Rome ever produced—the Coliseum. The sides rose at an angle of  $52^{\circ} 10'$ ; and the perpendicular height was four hundred and fifty-four feet, or fifty feet more than that of the spire of Salisbury Cathedral. The cubic contents are estimated at 71,670,000 feet; and their weight is calculated at 5,309,000 tons. Numbers like this, require to be made intelligible by comparisons. 9/10.8

The Second Pyramid, which stands to the north-east of the Third, was a square of seven hundred and seven feet each way, and thus covered an area of almost eleven acres and a half, or nearly double that of the greatest building which Rome ever produced—the Coliseum. The sides rose at an angle of  $52^{\circ} 10'$ ; and the perpendicular height was four hundred and fifty-four feet, or fifty feet more than that of the spire of Salisbury Cathedral. The cubic contents are estimated at 71,670,000 feet; and their weight is calculated at 5,309,000 tons. Numbers like this, require to be made intelligible by comparisons. 9/10.8

Aspira XXNar Medium  
Aspira Medium

The Second Pyramid, which stands to the north-east of the Third, was a square of seven hundred and seven feet each way, and thus covered an area of almost eleven acres and a half, or nearly double that of the greatest building which Rome ever produced—the Coliseum. The sides rose at an angle of  $52^{\circ} 10'$ ; and the perpendicular height was four hundred and fifty-four feet, or fifty feet more than that of the spire of Salisbury Cathedral. The cubic contents are estimated at 71,670,000 feet; and their weight is calculated at 5,309,000 tons. Numbers like this, require to be made intelligible by comparisons. 9/10.8

The Second Pyramid, which stands to the north-east of the Third, was a square of seven hundred and seven feet each way, and thus covered an area of almost eleven acres and a half, or nearly double that of the greatest building which Rome ever produced—the Coliseum. The sides rose at an angle of  $52^{\circ} 10'$ ; and the perpendicular height was four hundred and fifty-four feet, or fifty feet more than that of the spire of Salisbury Cathedral. The cubic contents are estimated at 71,670,000 feet; and their weight is calculated at 5,309,000 tons. Numbers like this, require to be made intelligible by comparisons. 9/10.8

Aspira XXNar Light  
Aspira Light

The Second Pyramid, which stands to the north-east of the Third, was a square of seven hundred and seven feet each way, and thus covered an area of almost eleven acres and a half, or nearly double that of the greatest building which Rome ever produced—the Coliseum. The sides rose at an angle of  $52^{\circ} 10'$ ; and the perpendicular height was four hundred and fifty-four feet, or fifty feet more than that of the spire of Salisbury Cathedral. The cubic contents are estimated at 71,670,000 feet; and their weight is calculated at 5,309,000 tons. Numbers like this, require to be made intelligible by comparisons. 8/9.6

The Second Pyramid, which stands to the north-east of the Third, was a square of seven hundred and seven feet each way, and thus covered an area of almost eleven acres and a half, or nearly double that of the greatest building which Rome ever produced—the Coliseum. The sides rose at an angle of  $52^{\circ} 10'$ ; and the perpendicular height was four hundred and fifty-four feet, or fifty feet more than that of the spire of Salisbury Cathedral. The cubic contents are estimated at 71,670,000 feet; and their weight is calculated at 5,309,000 tons. Numbers like this, require to be made intelligible by comparisons. 8/9.6

Aspira XXNar Regular  
Aspira Regular

The Second Pyramid, which stands to the north-east of the Third, was a square of seven hundred and seven feet each way, and thus covered an area of almost eleven acres and a half, or nearly double that of the greatest building which Rome ever produced—the Coliseum. The sides rose at an angle of  $52^{\circ} 10'$ ; and the perpendicular height was four hundred and fifty-four feet, or fifty feet more than that of the spire of Salisbury Cathedral. The cubic contents are estimated at 71,670,000 feet; and their weight is calculated at 5,309,000 tons. Numbers like this, require to be made intelligible by comparisons. 8/9.6

The Second Pyramid, which stands to the north-east of the Third, was a square of seven hundred and seven feet each way, and thus covered an area of almost eleven acres and a half, or nearly double that of the greatest building which Rome ever produced—the Coliseum. The sides rose at an angle of  $52^{\circ} 10'$ ; and the perpendicular height was four hundred and fifty-four feet, or fifty feet more than that of the spire of Salisbury Cathedral. The cubic contents are estimated at 71,670,000 feet; and their weight is calculated at 5,309,000 tons. Numbers like this, require to be made intelligible by comparisons. 8/9.6

Aspira XXNar Medium  
Aspira Medium

The Second Pyramid, which stands to the north-east of the Third, was a square of seven hundred and seven feet each way, and thus covered an area of almost eleven acres and a half, or nearly double that of the greatest building which Rome ever produced—the Coliseum. The sides rose at an angle of  $52^{\circ} 10'$ ; and the perpendicular height was four hundred and fifty-four feet, or fifty feet more than that of the spire of Salisbury Cathedral. The cubic contents are estimated at 71,670,000 feet; and their weight is calculated at 5,309,000 tons. Numbers like this, require to be made intelligible by comparisons. 8/9.6

The Second Pyramid, which stands to the north-east of the Third, was a square of seven hundred and seven feet each way, and thus covered an area of almost eleven acres and a half, or nearly double that of the greatest building which Rome ever produced—the Coliseum. The sides rose at an angle of  $52^{\circ} 10'$ ; and the perpendicular height was four hundred and fifty-four feet, or fifty feet more than that of the spire of Salisbury Cathedral. The cubic contents are estimated at 71,670,000 feet; and their weight is calculated at 5,309,000 tons. Numbers like this, require to be made intelligible by comparisons. 8/9.6



## Aspira Regular

12

Tabular lining  
numerals in table

Bolded text:  
Aspira Bold

	Wednesday			Thursday		
	°C	°F		°C	°F	
Abu Dhabi	44/33	111/91	S	45/32	113/90	PC
Almaty	28/17	82/63	T	28/17	82/63	PC
Athens	29/21	84/70	S	32/23	90/73	W
Bangkok	33/25	91/77	C	32/25	90/77	R
Barcelona	29/21	84/70	T	28/22	82/72	T
Beijing	30/21	86/70	PC	29/22	84/72	C
Belgrade	30/16	86/61	S	31/18	88/64	S
Berlin	27/16	81/61	PC	28/15	82/59	PC
Boston	33/24	91/75	PC	33/24	91/75	T
Brussels	26/16	79/61	PC	26/14	79/57	PC
Cairo	35/22	95/72	S	34/22	93/72	S
Chicago	33/24	91/75	PC	33/24	91/75	PC
Frankfurt	29/18	84/64	PC	29/18	84/64	PC
Geneva	28/14	82/57	T	27/15	81/59	T
Hong Kong	32/28	90/82	Sh	32/28	90/82	Sh
Istanbul	28/23	82/73	S	28/23	82/73	PC
Jakarta	31/24	88/75	R	31/24	88/75	R

## Aspira XXNar Regular

12

Bolded text:  
Aspira XXXNar Bold

	Wednesday			Thursday		
	°C	°F		°C	°F	
Abu Dhabi	44/33	111/91	S	45/32	113/90	PC
Almaty	28/17	82/63	T	28/17	82/63	PC
Athens	29/21	84/70	S	32/23	90/73	W
Bangkok	33/25	91/77	C	32/25	90/77	R
Barcelona	29/21	84/70	T	28/22	82/72	T
Beijing	30/21	86/70	PC	29/22	84/72	C
Belgrade	30/16	86/61	S	31/18	88/64	S
Berlin	27/16	81/61	PC	28/15	82/59	PC
Boston	33/24	91/75	PC	33/24	91/75	T
Brussels	26/16	79/61	PC	26/14	79/57	PC
Cairo	35/22	95/72	S	34/22	93/72	S
Chicago	33/24	91/75	PC	33/24	91/75	PC
Frankfurt	29/18	84/64	PC	29/18	84/64	PC
Geneva	28/14	82/57	T	27/15	81/59	T
Hong Kong	32/28	90/82	Sh	32/28	90/82	Sh
Istanbul	28/23	82/73	S	28/23	82/73	PC
Jakarta	31/24	88/75	R	31/24	88/75	R

## Aspira Regular

9

Tabular lining  
numerals in table

Bolded text:  
Aspira Demi

	<b>\$1</b>	<b>€1</b>	<b>£1</b>	<b>¥100</b>	<b>One ruble</b>	<b>One Swiss franc</b>	<b>One Can. doll.</b>
<b>Australia</b>	1.082	1.422	1.636	1.091	0.033	1.150	1.043
<b>Brazil</b>	2.250	2.957	3.401	2.268	0.068	2.391	2.168
<b>Britain</b>	0.661	0.869	–	0.667	0.020	0.703	0.637
<b>Canada</b>	1.038	1.364	1.569	1.046	0.320	1.103	–
<b>China</b>	6.135	8.063	9.273	6.184	0.189	6.518	5.911
<b>Denmark</b>	5.673	7.457	8.575	5.719	0.175	6.028	5.466
<b>Euro zone</b>	0.761	–	1.150	0.767	0.023	0.808	0.733
<b>India</b>	59.290	77.982	89.674	59.804	1.828	63.039	57.125
<b>Japan</b>	99.190	130.37	149.94	–	3.056	105.38	95.580
<b>Mexico</b>	12.648	16.625	19.119	12.800	0.000	13.439	12.186
<b>Russia</b>	32.443	42.643	49.041	32.700	–	34.470	31.258
<b>Singapore</b>	1.260	1.656	1.905	1.270	0.039	1.339	1.214
<b>S. Africa</b>	9.873	12.977	14.924	10.000	0.304	10.490	9.513
<b>Sweden</b>	6.596	8.671	9.972	6.650	0.203	7.009	6.356
<b>Switzerland</b>	0.941	1.237	1.422	0.949	0.029	–	0.907
<b>Taiwan</b>	29.774	39.135	45.006	30.000	0.918	31.631	28.687
<b>U.S.</b>	–	1.314	1.512	1.008	0.031	1.063	0.963

## Aspira XXNar Regular

9

Bolded text:  
Aspira XXNar Demi

	<b>\$1</b>	<b>€1</b>	<b>£1</b>	<b>¥100</b>	<b>One ruble</b>	<b>One Swiss franc</b>	<b>One Can. doll.</b>
<b>Australia</b>	1.082	1.422	1.636	1.091	0.033	1.150	1.043
<b>Brazil</b>	2.250	2.957	3.401	2.268	0.068	2.391	2.168
<b>Britain</b>	0.661	0.869	–	0.667	0.020	0.703	0.637
<b>Canada</b>	1.038	1.364	1.569	1.046	0.320	1.103	–
<b>China</b>	6.135	8.063	9.273	6.184	0.189	6.518	5.911
<b>Denmark</b>	5.673	7.457	8.575	5.719	0.175	6.028	5.466
<b>Euro zone</b>	0.761	–	1.150	0.767	0.023	0.808	0.733
<b>India</b>	59.290	77.982	89.674	59.804	1.828	63.039	57.125
<b>Japan</b>	99.190	130.37	149.94	–	3.056	105.38	95.580
<b>Mexico</b>	12.648	16.625	19.119	12.800	0.000	13.439	12.186
<b>Russia</b>	32.443	42.643	49.041	32.700	–	34.470	31.258
<b>Singapore</b>	1.260	1.656	1.905	1.270	0.039	1.339	1.214
<b>S. Africa</b>	9.873	12.977	14.924	10.000	0.304	10.490	9.513
<b>Sweden</b>	6.596	8.671	9.972	6.650	0.203	7.009	6.356
<b>Switzerland</b>	0.941	1.237	1.422	0.949	0.029	–	0.907
<b>Taiwan</b>	29.774	39.135	45.006	30.000	0.918	31.631	28.687
<b>U.S.</b>	–	1.314	1.512	1.008	0.031	1.063	0.963

## Aspira Regular

7

	\$1	€1	£1	¥100	One ruble	One Swiss franc	One Can. doll.
Australia	1.082	1.422	1.636	1.091	0.033	1.150	1.043
Brazil	2.250	2.957	3.401	2.268	0.068	2.391	2.168
Britain	0.661	0.869	–	0.667	0.020	0.703	0.637
Canada	1.038	1.364	1.569	1.046	0.320	1.103	–
China	6.135	8.063	9.273	6.184	0.189	6.518	5.911
Denmark	5.673	7.457	8.575	5.719	0.175	6.028	5.466
Euro zone	0.761	–	1.150	0.767	0.023	0.808	0.733
India	59.290	77.982	89.674	59.804	1.828	63.039	57.125
Japan	99.190	130.37	149.94	–	3.056	105.38	95.580
Mexico	12.648	16.625	19.119	12.800	0.000	13.439	12.186
Russia	32.443	42.643	49.041	32.700	–	34.470	31.258
Singapore	1.260	1.656	1.905	1.270	0.039	1.339	1.214
S. Africa	9.873	12.977	14.924	10.000	0.304	10.490	9.513
Sweden	6.596	8.671	9.972	6.650	0.203	7.009	6.356
Switzerland	0.941	1.237	1.422	0.949	0.029	–	0.907
Taiwan	29.774	39.135	45.006	30.000	0.918	31.631	28.687
U.S.	–	1.314	1.512	1.008	0.031	1.063	0.963

## Aspira XXNar Regular

7

	\$1	€1	£1	¥100	One ruble	One Swiss franc	One Can. doll.
Australia	1.082	1.422	1.636	1.091	0.033	1.150	1.043
Brazil	2.250	2.957	3.401	2.268	0.068	2.391	2.168
Britain	0.661	0.869	–	0.667	0.020	0.703	0.637
Canada	1.038	1.364	1.569	1.046	0.320	1.103	–
China	6.135	8.063	9.273	6.184	0.189	6.518	5.911
Denmark	5.673	7.457	8.575	5.719	0.175	6.028	5.466
Euro zone	0.761	–	1.150	0.767	0.023	0.808	0.733
India	59.290	77.982	89.674	59.804	1.828	63.039	57.125
Japan	99.190	130.37	149.94	–	3.056	105.38	95.580
Mexico	12.648	16.625	19.119	12.800	0.000	13.439	12.186
Russia	32.443	42.643	49.041	32.700	–	34.470	31.258
Singapore	1.260	1.656	1.905	1.270	0.039	1.339	1.214
S. Africa	9.873	12.977	14.924	10.000	0.304	10.490	9.513
Sweden	6.596	8.671	9.972	6.650	0.203	7.009	6.356
Switzerland	0.941	1.237	1.422	0.949	0.029	–	0.907
Taiwan	29.774	39.135	45.006	30.000	0.918	31.631	28.687
U.S.	–	1.314	1.512	1.008	0.031	1.063	0.963





## OpenType Features

Ligatures

fb ff fh fi fj fk fl  
ffb ffh ffi ffj ffk ffl

fb ff fh fi fj fk fl  
ffb ffh ffi ffj ffk ffl

All Caps  
(including Case Sensitive Forms)

Road Straße  
¿[H-o-h]?

ROAD STRASSE  
¿[H-O-H]?

Small Caps

Road Straße

ROAD STRASSE

All Small Caps

Road Straße

ROAD STRASSE

Tabular Numerals  
(including \$¢€£¥¢₹.,:;)

010123456789  
\$¢€£¥¢₹.,:;  
**010123456789**  
€173,731.37  
\$618,485.96  
**\$618,485.96**  
**\$618,485.96**  
\$618,485.96

010123456789  
\$¢€£¥¢₹.,:;  
**010123456789**  
€173,731.37  
\$618,485.96  
**\$618,485.96**  
**\$618,485.96**  
\$618,485.96

Oldstyle Numerals  
(including \$¢€£¥¢₹)

010123456789  
\$¢€£¥¢₹

010123456789  
\$¢€£¥¢₹

Tabular Oldstyle Numerals  
(including \$¢€£¥¢₹.,:;)

010123456789  
\$¢€£¥¢₹.,:;

010123456789  
\$¢€£¥¢₹.,:;

Arbitrary Fractions

5/8 14/56 48 2/3

5/8 14/56 48<sup>2</sup>/3

Superior & Inferior Numerals

H2O H2O

H<sup>2</sup>O H<sub>2</sub>O

Numerators & Denominators

H2O H2O

H<sup>2</sup>O H<sub>2</sub>O

Ordinals

Ha Ho

H<sup>a</sup> H<sup>o</sup>

Slashed Zero

00oo <sup>0</sup> <sub>0</sub> <sup>0</sup> <sub>0</sub>

0000 <sup>0</sup> <sub>0</sub> <sup>0</sup> <sub>0</sub>

Stylistic Set 1 (or Stylistic Alternates)

1111 <sup>1</sup> <sub>1</sub> <sup>1</sup> <sub>1</sub> 1/4 1/2

1111 <sup>1</sup> <sub>1</sub> <sup>1</sup> <sub>1</sub> 1/4 1/2

Turkish, Azeri, Crimean Tatar (All Caps)

için çıkması

İÇİN ÇIKMASI

Romanian, Moldovan

afişării AFIȘĂRII

afișării AFIȘĂRII

Go placidly amid the noise and haste,  
and remember what peace there may be in silence.  
As far as possible without surrender  
be on good terms with all persons.  
Speak your truth quietly and clearly;  
and listen to others,  
even the dull and the ignorant;  
they too have their story.

If you compare yourself with others,  
you may become vain and bitter;  
for always there will be greater and lesser persons than yourself.  
Enjoy your achievements as well as your plans.

Be yourself.  
Especially, do not feign affection.  
Neither be cynical about love;  
for in the face of all aridity and disenchantment  
it is as perennial as the grass.

Take kindly the counsel of the years,  
gracefully surrendering the things of youth.  
Nurture strength of spirit to shield you in sudden misfortune.  
But do not distress yourself with dark imaginings.  
Many fears are born of fatigue and loneliness.  
Beyond a wholesome discipline,  
be gentle with yourself.

You are a child of the universe,  
no less than the trees and the stars;  
you have a right to be here.  
And whether or not it is clear to you,  
no doubt the universe is unfolding as it should.

Whatever your labors and aspirations  
in the noisy confusion of life,  
keep peace with your soul.  
With all its sham, drudgery, and broken dreams,  
it is still a beautiful world.

—Max Ehrmann

Go placidly amid the noise and haste,  
and remember what peace there may be in silence.

As far as possible without surrender  
be on good terms with all persons.

Speak your truth quietly and clearly;  
and listen to others,  
even the dull and the ignorant;  
they too have their story.

If you compare yourself with others,  
you may become vain and bitter;  
for always there will be greater and lesser persons than yourself.  
Enjoy your achievements as well as your plans.

Be yourself.  
Especially, do not feign affection.  
Neither be cynical about love;  
for in the face of all aridity and disenchantment  
it is as perennial as the grass.

Take kindly the counsel of the years,  
gracefully surrendering the things of youth.  
Nurture strength of spirit to shield you in sudden misfortune.  
But do not distress yourself with dark imaginings.  
Many fears are born of fatigue and loneliness.  
Beyond a wholesome discipline,  
be gentle with yourself.

You are a child of the universe,  
no less than the trees and the stars;  
you have a right to be here.  
And whether or not it is clear to you,  
no doubt the universe is unfolding as it should.

Whatever your labors and aspirations  
in the noisy confusion of life,  
keep peace with your soul.  
With all its sham, drudgery, and broken dreams,  
it is still a beautiful world.

—Max Ehrmann

Aspira

Heavy

minimum

Regular

The early bird catches the worm

Demi

quadraphonic springboard

Thin

discombobulation

Medium

statutorily prescribed qualification procedures

Black

**DESIDERATA**

Bold

give me some song and dance

Bold

**total shoptalk**

Medium

(if you can't sing it) you'll have to swing it

Heavy

**Reach for the stars!**

Bold

The whole is greater than the sum of its parts

Thin

I'm beginning to see the light

**minimum**

The early bird catches the worm

**quadraphonic springboard**

discombobulation

statutorily prescribed qualification procedures

**DESIDERATA**

**give me some song and dance**

**total shoptalk**

(if you can't sing it) you'll have to swing it

**Reach for the stars!**

**The whole is greater than the sum of its parts**

I'm beginning to see the light

Aspira

Medium

The Long and Winding Road

Black

**NINE DAYS' WONDER**

Light

phenomenology

Demi Italic

*make the secret work*

Medium

**bloated details**

Heavy

**TALK THE TALK... WALK THE WALK**

Medium

An aspiration is a joy for ever (Robert Louis Stevenson)

Bold

**Boolean concept**

Thin

let's walk on air

Bold

**go the extra mile**

Thin

Art is long—life is short

Medium

**Sing the song of life**

# The Long and Winding Road

**NINE DAYS' WONDER**

phenomenology

*make the secret work*

**bloated details**

**TALK THE TALK... WALK THE WALK**

*An aspiration is a joy for ever (Robert Louis Stevenson)*

**Boolean concept**

let's walk on air

**go the extra mile**

Art is long—life is short

**Sing the song of life**

Czech  
Danish  
Dutch  
English  
Finnish  
French  
German  
Hungarian  
Italian  
Norwegian  
Polish  
Portuguese  
Romanian  
Slovak  
Slovene  
Spanish  
Swedish  
Turkish

Ballpark Context Reflection Widget  
Overjoy Kangaroo: 'Quota' Editorial  
Conundrum; Kafka, "Squibs" Catfish.  
Uspořádání Čerpadla Společenských  
Lønindtægter Perioodespørgsmål  
Ægtefællers Ideeënbus Plaaggeest  
Flappentapperconcurrenten Spill  
Jellybeans Graffiti Järjestelmässä  
Käyttöön Räätelöityjä Hétérogène  
Façon Intérêts Äußerungen  
Bedürfnisse Textverständnis  
Készítéséről Fejlesztjük Biztosítási  
Razionalità Pensò All'amore Våre  
Primærleger Gjør Umiejętności Łódź  
Zakończył Publicações Secção Três  
Şcoală Învăţământ Țânţar Možnosť  
Požičovňa Špecializovaný Življenju  
Različnih Priporočljivejše Artículo  
Imaginación Niño Dörrmiljöer Såväl  
Välgörenhet Aldığı Söylüyorlar Açış

Lining Numerals

We bought 25 apples and 36 pears.

Oldstyle Numerals

We bought 25 apples and 36 pears.



Czech  
 Danish  
 Dutch  
 English  
 Finnish  
 French  
 German  
 Hungarian  
 Italian  
 Norwegian  
 Polish  
 Portuguese  
 Romanian  
 Slovak  
 Slovene  
 Spanish  
 Swedish  
 Turkish

Ballpark Context Reflection Widget  
 Overjoy Kangaroo: 'Quota' Editorial  
 Conundrum; Kafka, "Squibs" Catfish.  
 Uspořádání Čerpadla Společenských  
 Lønindtægter Perioodespørgsmål  
 Ægtefællers Ideeënbus Plaaggeest  
 Flappentapperconcurrenten Spill  
 Jellybeans Graffiti Järjestelmässä  
 Käyttöön Räätelöityjä Hétérogène  
 Façon Intérêts Äußerungen  
 Bedürfnisse Textverständnis  
 Készítéséről Fejlesztjük Biztosítási  
 Razionalità Pensò All'amore Våre  
 Primærleger Gjør Umiejętności Łódź  
 Zakończył Publicações Secção Três  
 Şcoală Învăţământ Țânțar Možnosť  
 Požičovňa Špecializovaný Življenju  
 Različnih Priporočljivejše Artículo  
 Imaginación Niño Dörrmiljöer Såväl  
 Vålgörenhet Aldığı Söylüyorlar Açış

Lining Numerals

*We bought 25 apples and 36 pears.*

Oldstyle Numerals

*We bought 25 apples and 36 pears.*

Aspira Nar Medium  
All Caps

19

NIRVANA CREATE DEDICATION TECHNICAL  
RECEPTION INTERPOLATE BELLYBUTTON  
KNOB NOURISHING VOLT FOREVERMORE  
GREGARIOUS MEETING ENCLAVE UNION  
LEMONADE SPECIAL OFFICE WATERLINE  
BEHAVIOR PARADISE ZEBRAWOOD

Aspira Nar Medium Italic  
All Caps

19

*NIRVANA CREATE DEDICATION TECHNICAL  
RECEPTION INTERPOLATE BELLYBUTTON  
KNOB NOURISHING VOLT FOREVERMORE  
GREGARIOUS MEETING ENCLAVE UNION  
LEMONADE SPECIAL OFFICE WATERLINE  
BEHAVIOR PARADISE ZEBRAWOOD*

Aspira Nar Medium  
Small Caps

19

NIRVANA CREATE DEDICATION TECHNICAL  
RECEPTION INTERPOLATE BELLYBUTTON  
KNOB NOURISHING VOLT FOREVERMORE  
GREGARIOUS MEETING ENCLAVE UNION  
LEMONADE SPECIAL OFFICE WATERLINE  
BEHAVIOR PARADISE ZEBRAWOOD

Aspira Nar Medium Italic  
Small Caps

19

*NIRVANA CREATE DEDICATION TECHNICAL  
RECEPTION INTERPOLATE BELLYBUTTON  
KNOB NOURISHING VOLT FOREVERMORE  
GREGARIOUS MEETING ENCLAVE UNION  
LEMONADE SPECIAL OFFICE WATERLINE  
BEHAVIOR PARADISE ZEBRAWOOD*

**Standard 'Zero'**  
**Standard 'One'**

Columns 1 and 2 of table:  
Tabular lining numerals

Columns 3 and 4 of table:  
Proportional lining numerals

Columns 5 and 6 of table:  
Proportional oldstyle numerals

Column 7 of table:  
Tabular oldstyle numerals

5596018	7344147	5596018	7344147	5596018	7344147	7344147
8043103	4170552	8043103	4170552	8043103	4170552	4170552
7027250	3224843	7027250	3224843	7027250	3224843	3224843
6003133	9488044	6003133	9488044	6003133	9488044	9488044
9929267	1528306	9929267	1528306	9929267	1528306	1528306
7537954	9968449	7537954	9968449	7537954	9968449	9968449
2000569	4711380	2000569	4711380	2000569	4711380	4711380
9510371	8753379	9510371	8753379	9510371	8753379	8753379
2779683	3958609	2779683	3958609	2779683	3958609	3958609
1456616	8686229	1456616	8686229	1456616	8686229	8686229

**Standard 'Zero'**  
**Alternative 'One'**

Alternative 'One' is available via  
"Stylistic Set 1" OpenType feature or via  
"Stylistic Alternates" OpenType feature

Aspira Nar Regular 10

5596018	7344147	5596018	7344147	5596018	7344147	7344147
8043103	4170552	8043103	4170552	8043103	4170552	4170552
7027250	3224843	7027250	3224843	7027250	3224843	3224843
6003133	9488044	6003133	9488044	6003133	9488044	9488044
9929267	1528306	9929267	1528306	9929267	1528306	1528306
7537954	9968449	7537954	9968449	7537954	9968449	9968449
2000569	4711380	2000569	4711380	2000569	4711380	4711380
9510371	8753379	9510371	8753379	9510371	8753379	8753379
2779683	3958609	2779683	3958609	2779683	3958609	3958609
1456616	8686229	1456616	8686229	1456616	8686229	8686229

**Dotted 'Zero'**  
**Standard 'One'**

Dotted 'Zero' is available via  
"Slashed Zero" OpenType feature

5596018	7344147	5596018	7344147	5596018	7344147	7344147
8043103	4170552	8043103	4170552	8043103	4170552	4170552
7027250	3224843	7027250	3224843	7027250	3224843	3224843
6003133	9488044	6003133	9488044	6003133	9488044	9488044
9929267	1528306	9929267	1528306	9929267	1528306	1528306
7537954	9968449	7537954	9968449	7537954	9968449	9968449
2000569	4711380	2000569	4711380	2000569	4711380	4711380
9510371	8753379	9510371	8753379	9510371	8753379	8753379
2779683	3958609	2779683	3958609	2779683	3958609	3958609
1456616	8686229	1456616	8686229	1456616	8686229	8686229

**Dotted 'Zero'**  
**Alternative 'One'**

5596018	7344147	5596018	7344147	5596018	7344147	7344147
8043103	4170552	8043103	4170552	8043103	4170552	4170552
7027250	3224843	7027250	3224843	7027250	3224843	3224843
6003133	9488044	6003133	9488044	6003133	9488044	9488044
9929267	1528306	9929267	1528306	9929267	1528306	1528306
7537954	9968449	7537954	9968449	7537954	9968449	9968449
2000569	4711380	2000569	4711380	2000569	4711380	4711380
9510371	8753379	9510371	8753379	9510371	8753379	8753379
2779683	3958609	2779683	3958609	2779683	3958609	3958609
1456616	8686229	1456616	8686229	1456616	8686229	8686229

## 112 Fonts

7 widths  
8 weights  
plus italics

Aspira XXXNar Regular 10

Aspira XXXNar Thin	Aspira XXNar Thin	Aspira XNar Thin	Aspira Nar Thin
Aspira XXXNar Light	Aspira XXNar Light	Aspira XNar Light	Aspira Nar Light
Aspira XXXNar Regular	Aspira XXNar Regular	Aspira XNar Regular	Aspira Nar Regular
Aspira XXXNar Medium	Aspira XXNar Medium	Aspira XNar Medium	Aspira Nar Medium
Aspira XXXNar Demi	Aspira XXNar Demi	Aspira XNar Demi	Aspira Nar Demi
Aspira XXXNar Bold	Aspira XXNar Bold	Aspira XNar Bold	Aspira Nar Bold
Aspira XXXNar Heavy	Aspira XXNar Heavy	Aspira XNar Heavy	Aspira Nar Heavy
Aspira XXXNar Black	Aspira XXNar Black	Aspira XNar Black	Aspira Nar Black
Aspira XXXNar Thin Italic	Aspira XXNar Thin Italic	Aspira XNar Thin Italic	Aspira Nar Thin Italic
Aspira XXXNar Light Italic	Aspira XXNar Light Italic	Aspira XNar Light Italic	Aspira Nar Light Italic
Aspira XXXNar Italic	Aspira XXNar Italic	Aspira XNar Italic	Aspira Nar Italic
Aspira XXXNar Medium Italic	Aspira XXNar Medium Italic	Aspira XNar Medium Italic	Aspira Nar Medium Italic
Aspira XXXNar Demi Italic	Aspira XXNar Demi Italic	Aspira XNar Demi Italic	Aspira Nar Demi Italic
Aspira XXXNar Bold Italic	Aspira XXNar Bold Italic	Aspira XNar Bold Italic	Aspira Nar Bold Italic
Aspira XXXNar Heavy Italic	Aspira XXNar Heavy Italic	Aspira XNar Heavy Italic	Aspira Nar Heavy Italic
Aspira XXXNar Black Italic	Aspira XXNar Black Italic	Aspira XNar Black Italic	Aspira Nar Black Italic
Aspira Thin	Aspira Wide Thin	Aspira XWide Thin	
Aspira Light	Aspira Wide Light	Aspira XWide Light	
Aspira Regular	Aspira Wide Regular	Aspira XWide Regular	
Aspira Medium	Aspira Wide Medium	Aspira XWide Medium	
Aspira Demi	Aspira Wide Demi	Aspira XWide Demi	
Aspira Bold	Aspira Wide Bold	Aspira XWide Bold	
Aspira Heavy	Aspira Wide Heavy	Aspira XWide Heavy	
Aspira Black	Aspira Wide Black	Aspira XWide Black	
Aspira Thin Italic	Aspira Wide Thin Italic	Aspira XWide Thin Italic	
Aspira Light Italic	Aspira Wide Light Italic	Aspira XWide Light Italic	
Aspira Italic	Aspira Wide Italic	Aspira XWide Italic	
Aspira Medium Italic	Aspira Wide Medium Italic	Aspira XWide Medium Italic	
Aspira Demi Italic	Aspira Wide Demi Italic	Aspira XWide Demi Italic	
Aspira Bold Italic	Aspira Wide Bold Italic	Aspira XWide Bold Italic	
Aspira Heavy Italic	Aspira Wide Heavy Italic	Aspira XWide Heavy Italic	
Aspira Black Italic	Aspira Wide Black Italic	Aspira XWide Black Italic	

## Seven Font Families

The Aspira type system consists of 7 complete font families. Each of these 7 subfamilies represents a different width. Each of these 7 width-subfamilies can be used independently. Although, technically, Aspira consists of 7 separate font families — concerning the design, all 112 fonts of Aspira are related.

When all width-subfamilies of Aspira are installed — to select a specific style, first look for the desired width-subfamily, and, after that, choose the desired style from that width-subfamily.

If you do not see all installed fonts in the font menu of your application, your application uses font style links. Then you cannot directly select all installed fonts of this font family. You have to select the fonts which are not in the font menu, like this:

Font to select	First select in font menu	Then use style button(s) or font style menu
Aspira Thin Italic	Aspira Thin	Italic
Aspira Light Italic	Aspira Light	Italic
Aspira Regular	Aspira	[none]
Aspira Italic	Aspira	Italic
Aspira Medium Italic	Aspira Medium	Italic
Aspira Demi	Aspira Light	Bold
Aspira Demi Italic	Aspira Light	Bold, Italic
Aspira Bold	Aspira	Bold
Aspira Bold Italic	Aspira	Bold, Italic
Aspira Heavy	Aspira Medium	Bold
Aspira Heavy Italic	Aspira Medium	Bold, Italic
Aspira Black Italic	Aspira Black	Italic

The style linking information in the table above, is for the normal width subfamily (i.e. without a width indication in the name). After adding a width indication like 'XNar' or 'Wide', this table can also be used for the narrower and wider subfamilies.

Another way to represent the style linking system of this font family, is as follows:

Style in font menu	Use this (these) style link(s)	To produce this style
Thin	Italic	Thin Italic
Light	Italic Bold Bold, Italic	Light Italic Demi Demi Italic
[Regular] *	Italic Bold Bold, Italic	Italic Bold Bold Italic
Medium	Italic Bold Bold, Italic	Medium Italic Heavy Heavy Italic
Black	Italic	Black Italic

\* In a style linking environment, the word 'Regular' is usually omitted from the font menu (so only the family name is being displayed).

Note that the Thin and Black styles are not style-linked to a heavier style, so the Bold style button should not be used with the Thin and Black styles. (Using the Bold style button with these styles, will either have no effect, or will result in artificial bolding, which usually produces inferior screen and print results.)

## UltraPrecision

All Durotype fonts are UltraPrecision™ fonts. UltraPrecision fonts are 11.11 times more precise than PostScript (Type 1) fonts and most PostScript flavored OpenType fonts. UltraPrecision fonts are 2.65 times more precise than most TrueType fonts and most TrueType flavored OpenType fonts. The extra precision which is offered by UltraPrecision fonts, is advantageous when a font is printed or displayed in a large size.

## Supported Languages

Afrikaans, Albanian, Basque, Bosnian, Breton, Croatian, Czech, Danish, Dutch, English, Estonian, Faroese, Filipino, Finnish, French, Frisian, German, Hungarian, Icelandic, Indonesian, Italian, Malagasy, Moldovan (Latin), Norwegian, Polish, Portuguese, Romanian, Serbian (Latin), Slovak, Slovene, Spanish, Swedish, Turkish, Turkmen (Latin).

## Use

This font family is suitable for both text and display use.

## Notes

All 112 fonts of this type system contain the same glyphs and the same OpenType features.

The availability of OpenType features is dependent on application support.

The access to some glyphs may be dependent on application support for OpenType features.

## Other Durotype Fonts

Cigar

**Hamburgetypes with personality**

Classic Round

Hamburgetypes with personality

Classic XtraRound

Hamburgetypes with personality

Flexo

Hamburgetypes with personality

Seconda

Hamburgetypes with personality

Seconda Soft

Hamburgetypes with personality

Seconda XtraSoft

Hamburgetypes with personality

Seconda Round

Hamburgetypes with personality

Simplo

Hamburgetypes with personality

Simplo Soft

Hamburgetypes with personality

*Thanks to* Iginio Marini ([www.ikern.com](http://www.ikern.com))

Aspira is a trademark of Durotype. UltraPrecision is a trademark of Durotype. “Passion for Fonts” is a trademark of Durotype. Durotype and the Durotype logo are trademarks of Durotype. OpenType is a trademark of Microsoft Corporation. TrueType is a trademark of Apple Computer, Inc. PostScript is a trademark of Adobe Systems Incorporated. All other trademarks are the property of their respective owners.

This PDF document may be used for evaluation purposes only. You may reproduce it on a personal printer, and you may distribute it to others, provided that you do not alter it.

Copyright © 2014 Durotype. All rights reserved.

[www.durotype.com](http://www.durotype.com)

3/14 v1.0